

# Nebraska Child Abuse Prevention Fund

## Annual Report

FY 2007-2008



## Contents

History and Operations of the NCAPF Board	3
NCAPF Board of Directors	3
Spotlights:	4
<i>Children Need Everyday Heroes</i> Conference	
<i>Rethink Your Reaction</i> Public Awareness Campaign	
Funding Priorities	5
The Funding Process	7
Program Grant Awards FY 2006-2007	8
Awards by Congressional District	11
Year End Data	12
Appendix: NE Abuse and Neglect Trends	13



***Promoting the  
Good Life  
for Nebraska's  
Children***



## History & Operations

### Nebraska Child Abuse Prevention Fund Board

The Nebraska Child Abuse Prevention Fund (NCAPF) was created in 1986 by the State legislature in recognition of the need to make the prevention of child abuse and neglect a priority for all citizens in Nebraska.

An initial task of the Prevention Fund Board (as required by law) was to create a State Plan. The purpose of the State Plan was to identify the needs, problems and potential solutions regarding child abuse and neglect in Nebraska.

Recognizing that the problems leading to and created by child abuse and neglect may vary from community to community, the board members called for public forums across the entire state; recommendations were sought from the people of Nebraska about child abuse and neglect priorities. As a result of these meetings, a State Plan was created in 1988 that identified six priority areas specific to Nebraska in preventing child abuse and neglect.

A nine-member Board of Directors, nominated by the Governor and approved by the State Legislature, governs the Nebraska Child Abuse Prevention Fund. The activities of the Prevention Fund Board include: disbursement of funds, information exchange, community education, priority setting and technical assistance. The Nebraska Child Abuse Prevention Fund is administered under the auspices of the Nebraska Department of Health and Human Services.

The Nebraska Child Abuse Prevention Fund is funded by a \$250,000 annual legislative appropriation with offsetting revenue collected from surtax on divorce filings and birth certificates. Other sources of funding may include grants, gifts, bequests and donations. In any fiscal year, no more than 20% of the annually available funds can be disbursed to one agency, organization or individual.

## Board of Directors

### FY 2007 - 2008

Per Nebraska Statute 43-1903, the NCAPF Board "shall be comprised of nine members as follows: Two representatives of the Department of Health and Human Services appointed by the chief executive officer and seven members to be appointed by the Governor with the approval of the Legislature. The Governor shall appoint two members from each of the three congressional districts and one member from the state at large."

#### District I

Rev. Dr. Rebecca Brown, Lincoln

Parrish McDonald, Lincoln

#### District II

Sandra Markley, Omaha

Tawanna Black, Omaha

#### District III

Pat Madsen, Stuart

Angela Wagner, Culbertson

#### Member-At-Large

Jennie Cole-Mossman, Lincoln

#### DHHS Representatives

Todd Reckling, Administrator, Office of Protection and Safety

Dr. Joann Schaefer, Chief Medical Officer, Department of Regulation and Licensure

#### Staff Support

Shirley Pickens White, DHHS

Staff of the Nebraska Children and Families Foundation - Prevent Child Abuse Nebraska Program

# Spotlights

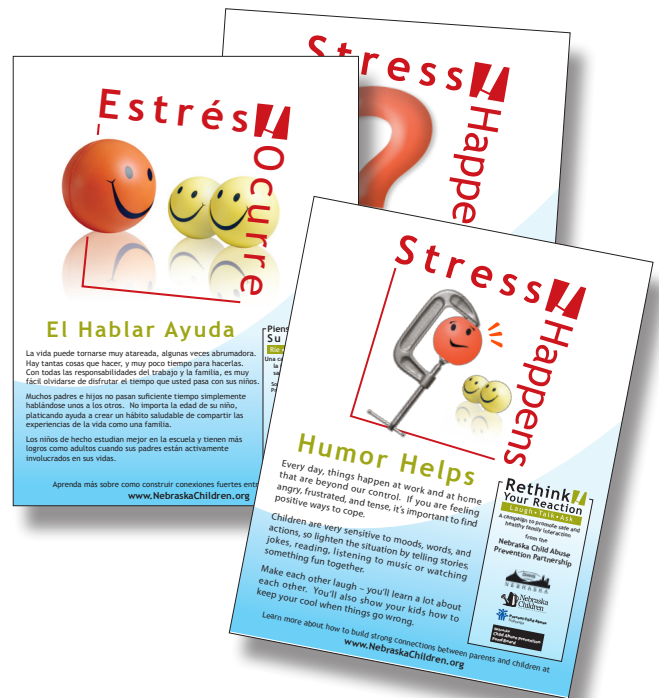
## Statewide Activity in Child Abuse Prevention

### Statewide Conference

The 6<sup>th</sup> Annual Nebraska Child Abuse Prevention Conference, *Children Need Everyday Heroes*, was held in Kearney on August 29-30. The conference featured over 30 individual sessions on prevention, treatment, and investigation. Over 275 persons attended, including (but not limited to) professionals from the Nebraska Department of Health and Human Services Division of Protection and Safety, court appointed special advocates, child advocacy centers, Head Start, county attorneys, pediatricians, domestic violence/sexual assault coalitions, mental health, child care, foster care providers and other areas.

### Public Awareness

Recognizing the importance of stress as a factor in child abuse and neglect, the Prevention Partnership, including the NCAPF Board, guided the development of the *Rethink Your Reaction* campaign. This was the first ever Nebraska-originated, statewide April Child Abuse Prevention campaign. Twenty-four local Child Abuse Prevention Councils and other organizations conducted this campaign in Lincoln, Omaha, and numerous communities in Greater Nebraska. Participating communities employed a combination of campaign strategies that included distribution of brochures and posters, placement of newspaper, radio and TV ads, and hosting family events.



A sampling of English and Spanish communications pieces developed for the 2008 Rethink Your Reaction campaign. The materials focused on promoting one or more of the three principal campaign messages: humor, talking and asking for help can help reduce stress in the family.



# Funding Priorities

## Focus Areas for the Prevention of Child Abuse and Neglect in Nebraska

In 2006, the Nebraska Child Abuse Prevention Fund Board began new collaboration with two other state-level entities with a common purpose of preventing child abuse. These entities are The Nebraska Department of Health and Human Services and The Nebraska Children and Families Foundation. Together, the three entities comprise the Nebraska Statewide Child Abuse Prevention Partnership.

A coalition of representatives from each partner leads the work of the Prevention Partnership and guides statewide child abuse prevention planning, public awareness and education concerning child abuse and neglect issues, and distribution and monitoring of community-based child abuse prevention grants.

As a member of the Nebraska Child Abuse Prevention Partnership, Nebraska Child Abuse Prevention Fund Board activities were directed to focus on:

- Promotion of evidence-based child abuse prevention programs and practices
- Progress toward common evaluation tools and processes for grantees
- Increasing public awareness and involvement in prevention of child abuse and neglect
- Technical assistance and grant making to build capacity and facilitate collaboration at local and multi-community levels
- Increased funding and other resources for child abuse prevention efforts

The Nebraska Child Abuse Prevention Plan became the basis for Nebraska Child Abuse Prevention Fund Board Vision, Goals and Guidelines summarized in the following pages.

### I Vision

- Children are nurtured, supported and protected within a safe and stable home and community environment
- Families recognize the rewards and responsibilities of raising children and have access to support within their own communities to help them meet those responsibilities
- Families are able to ask for and receive timely assistance without feelings of inadequacy or fear of being punished or blamed
- Communities are supported in their efforts to meet the diverse needs of families raising their children

### II Philosophical Base

- Child maltreatment is a public health issue
- Support services for families are seen as both necessary and desirable on a cultural level
- Services for families are founded upon Family-Centered Practice and are either evidence-based or promising practices
- All programs and services are culturally competent
- Preventing child abuse and neglect is a state, county and local government priority
- Every citizen of this state has a role in preventing the maltreatment of children
- Family and community leadership and empowerment are critical
- Integration and collaboration across systems maximizes results
- Research on the causes of child maltreatment and the efficacy of prevention efforts is supported and on-going

### III Outcomes

- Child abuse and neglect is recognized as a critical public health issue in Nebraska
- Children are safe, nurtured and live in stable environments that promote well-being
- A collaborative, responsive, family-centered prevention system exists that promotes the safety and well-being of children, families and communities
- The needs of children and families are addressed completely, collaboratively and effectively through a continuum of services
- A continuum of evidence-based prevention services exists, incorporating programs that adhere to evaluation and reporting procedures that ensure a high degree of accountability

### IV Key Principles and Guidelines

- Promote healthy parent/child relationships through community and institutional support of parenting
- Promote universal efforts to promote healthy parenting among all Nebraska families, including efforts directed towards higher risk families
- Target the developmental stages of pregnancy and the first years of a child's life as the foundation of our commitment to prevention
- Add supports at different developmental stages from infancy through teenage years that encourage the healthy formation of the parent-child relationship
- Match family needs with an appropriate level of support
- Integrate prevention and support services across public and private agencies
- Enhance the role of community institutions and information supports in helping families raise children
- Use family-centered practice in program planning, implementation and governance
- Be linguistically and culturally accessible and responsive
- Incorporate strong evidence-based strategies into program planning and implementation



# The Funding Process and Grant Types

## How Funding Proposals are Evaluated and Grants are Awarded

---

In making decisions about funding, the NCAPF Board members consider two primary objectives:

- 1. Programs should be funded throughout the entire state.**
- 2. Programs should meet the needs of each community.**

Any public or private group outside the state government may apply for a Child Abuse Prevention grant.

Proposals for funding are issued by the Nebraska Child Abuse Prevention Fund Board. Successful proposals may be funded for a maximum of three years, receiving up to 75% of the original funding the second year, and 50% of the original funding the third year.

Grant proposals are selected for award based on review criteria established by the NCAPF Board of Directors. The number of grant awards is dependent on the quality of proposals received from each of the three congressional districts.

The Nebraska Child Abuse Prevention Fund Board awards three types of grants:

### **1. Program Grants**

A program grant may be awarded for up to three years. The first year maximum amount is \$25,000; the second year of funding is 75% of the first year's award and the third year's funding is 50% of the first year's award.

### **2. Child Abuse Community Councils**

Child Abuse Councils may be awarded Council Grants for up to three years. The first year funding maximum is \$1,000, with second year funding at 75% of the first year's award and third year funding at 50% of the first year's award amount, provided all grant award conditions are met annually.

### **3. Mini-Grants**

Service providers may request a Mini-Grant of up to \$1,000. Existing mini-grants or similarities thereof will not be renewed, except for April Prevention Month activities where a Community Council may request \$1,000 each year for this purpose.

# FY 2007 - 2008 Grant Awards

Fiscal Year July 1, 2007 to June 30, 2008

## Program Grants

- Maximum of \$25,000 for Year One Awards
- 10 Program Grants were awarded during the 2007 - 2008 Fiscal Year

## Congressional District 1 Program Grants

### **Oasis Counseling International**

*Family Abuse Interventions and Treatment in Homes:  
Second Chance Program*

Funding Year Three: \$12,500

Administrative and Service Site: Norfolk, NE

Public and private service providers use family-centered practices and collaborate to serve families with children at risk of abuse due to their parent's substance abuse. Support is provided to parents through in-home training and support, family-to-family mentoring and community services.

Providers meet monthly to evaluate data, share knowledge and recommend program modifications as needed. Parents build a stronger community support system while nurturing their children.

### **Lincoln Lancaster County Health Department**

*Child Abuse Prevention (CAP) Project*

Funding Year Two: \$15,815

Administrative and Service Site: Lincoln, NE

The Child Abuse Prevention Project is designed to prevent child maltreatment among at-risk and low-income families. Public health nurses provide family-centered interventions and work to assess risks and build upon identified family strengths. Nurses rely on enhanced capabilities of the parents to foster positive and appropriate development of their children.

Funds will also support tracking of various risk factors and intervention outcomes for the 100 or more families that are participating. Collected data will be used to improve the program.

### **Asian Community and Cultural Center**

*Parenting Kindly*

Funding Year Two: \$18,750

Administrative and Service Site: Lincoln, NE

The Parenting Kindly program empowers Lincoln's Asian parents to discipline effectively. Parents are taught to reduce critical risk factors while enhancing protective factors for their children.

Parents and children meet in small groups, led through discussions by a skilled trainer/facilitator. This process helps parents employ discipline techniques such as positive reinforcement, ignoring undesirable behavior, distraction, etc. As a whole, the program improves problem-solving skills which in turn, strengthens families.

### **Heartland Big Brothers Big Sisters**

*Project Friendship*

Funding Year Three: \$10,494

Administrative and Service Site: Lincoln, NE

Project Friendship is a partnership between the Heartland Big Brothers/Big Sisters program and the Friendship Home. The program helps children who have witnessed domestic violence by providing supportive and professional one-on-one relationships.

The process includes weekly meetings with volunteer mentors for at least 12 months. Mentors are provided by Heartland Big Brothers/Big Sisters.



**City of Lincoln Parks and Recreation Department**  
*Developmental Play for Children with Special Needs and their Families*

Funding Year One: \$24,888

Administrative and Service Site: Lincoln, NE

Recreational and Social opportunities are provided for children with disabilities ages 6 months through 5 years and their families. Modified play units and accessible play areas at the Ager Indoor Playground are used to instruct parents and siblings in appropriate play with disabled children. Play time is organized and supervised by a certified recreational therapist.

One night per week, parents network to share information regarding their children's needs.

**Friendship Home / Family Violence Council**  
*Practice Positive*

Funding Year Two: \$18,525

Administrative and Service Site: Lincoln, NE

Grant funds for Practice Positive will be used for an anti-bullying campaign developed with the partnership of Lincoln Public Schools and Swanson Russell. The campaign helps parents curb bullying behavior in their children by examining their own behaviors.

The campaign will consist of a website, billboards, print and radio ads as well as a resource booklet.

**Congressional District 2 Program Grants**

**Camp Fire USA of the Midlands**  
*World and Web Wise Kids: Child Abuse Prevention Education*

Funding Year One: \$25,000

Administrative and Service Site: Omaha, NE

This initiative is based in a collaborative of Campfire of the Midlands, Omaha Public Schools, McAuley Center for Women and Children, Salvation Army, Cox Communications and the Circle Theatre. It is working to provide sex abuse prevention education and Internet safety services to elementary school children in the Omaha schools, rural district schools and two homeless shelters.



## Congressional District 3 Program Grants

### **Regional West Medical Center**

#### *Building Family Strengths*

Funding Year Two: \$11,000

Administrative and Service Site: Scottsbluff, NE

Building Family Strengths is a mid-level home visitation service filling the gap between a single newborn home visitation and intensive services. The program reduces child abuse and neglect by increasing parent's capacity to properly care for their child while increasing their use of community resources.

The target population for this program includes teenage parents, single moms, families with limited resources, families with low birth weight infants, parents previously investigated for maltreatment and parents with known alcohol, drug or mental health problems.

### **Minnechaduzza Foundation**

#### *North Central Nebraska Child Abuse Prevention Project*

Funding Year Three: \$10,886

Administrative and Service Site: Valentine, NE

Funds for this project facilitate abuse and/or domestic violence trainings for health professionals, community leaders and LB1184 team members. These trainings allow for earlier recognition of potential child maltreatment and increase competency in protecting children.

Additionally, parents and child care workers participate in Love and Logic training sessions to improve their competence in providing nurturing and healthy environments for children.

### **Lutheran Family Services of Nebraska**

#### *Lexington Nurturing Parenting Program*

Funding Year Two: \$18,750

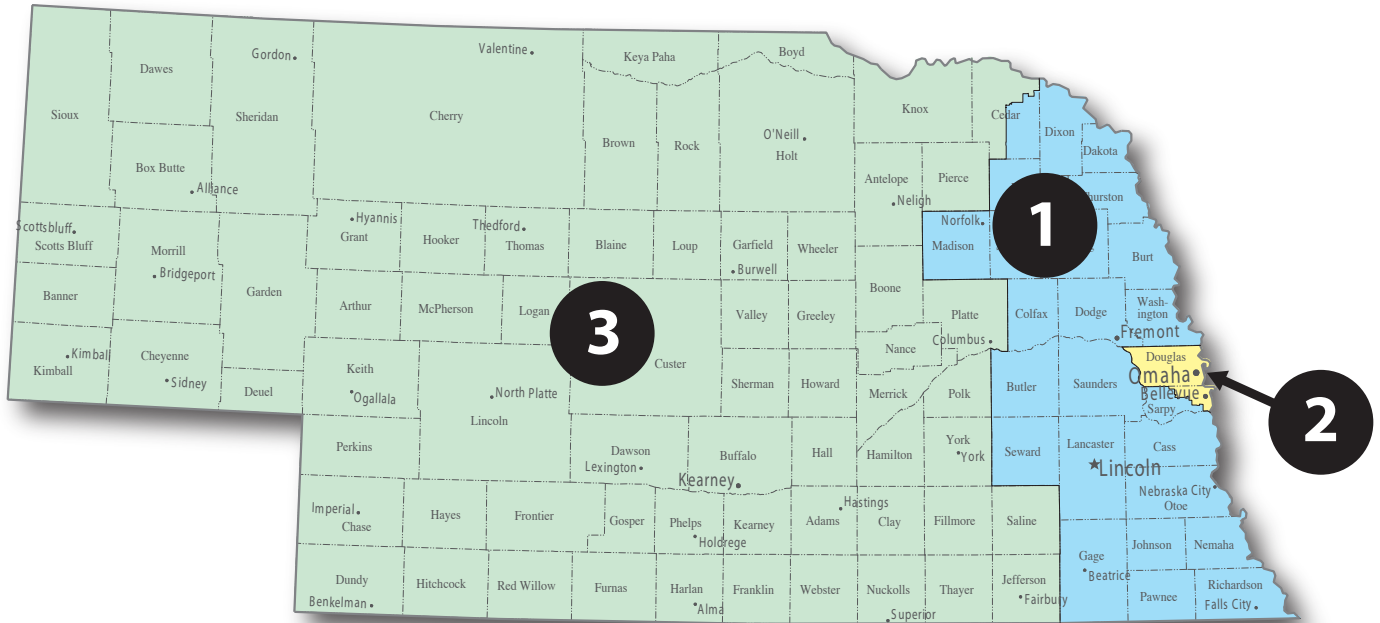
Administrative Site: Omaha, NE

Service Site: Lexington, NE

The Lexington Nurturing Parenting Program is a family-centered prevention initiative for the community's Hispanic families with children ages birth to 5 years. The program serves 12 to 15 families during each 16-week sequence, providing developmentally appropriate play activities and structured interaction between children and parents to enhance parenting skills. Parents become increasingly aware of the developmental needs of their children.

# Grant Awards by Congressional Districts

Fiscal Year 2007 to 2008



Program Grants	FY 2007 - 2008	
	Programs	Grants Awarded
Congressional District I	5	\$ 100,972.00
Congressional District II	1	\$ 25,000.00
Congressional District III	3 <sup>1</sup>	\$ 40,636.00
<b>Program Grant Total:</b>	<b>10</b>	<b>\$ 166,608.00</b>

<sup>1</sup> Includes one grantee (Lutheran Family Services) with administrative headquarter in Congressional District II, but whose NCAFP funded programs are serving residents in Congressional District III (Lexington).

# Program Grants: Year End Data

Fiscal Year 2007 to 2008

Grantee Name	Funding Year	# of Unduplicated Beneficiaries		# of Beneficiary Contacts Total		# of Volunteers Used	# of Volunteer Hours Committed	NCAPF \$ as % of Total Budget	Value of Monies Leveraged	Award Amount	Congressional District
		Adults	Children	Adults	Children						
Asian Community and Cultural Center (Lincoln)	2 <sup>nd</sup>	102	0	102	0	4	96	90%	\$2,137	\$18,750	1 <sup>st</sup>
Camp Fire USA Midlands (Omaha)	1 <sup>st</sup>	918	15,049	918	15,049	4	42	70%	\$10,800	\$25,000	2 <sup>nd</sup>
Heartland Big Brothers Big Sisters (Lincoln)	3 <sup>rd</sup>	0	48	0	310	53	938.5	61%	\$6,745	\$10,494	1 <sup>st</sup>
Lincoln Lancaster County Health Dept. (Lincoln)	2 <sup>nd</sup>	118	149	862 <sup>1</sup>	862	0	0	12%	\$114,480	\$15,815 <i>Actual Spent \$15,298.15<sup>2</sup></i>	1 <sup>st</sup>
Friendship Home o/b/o Family Violence Council (Lincoln)	N/A <sup>3</sup>	N/A	N/A	N/A	N/A	N/A	N/A	N/A	N/A	N/A	N/A
City of Lincoln Parks and Recreation (Lincoln)	1 <sup>st</sup>	44	38	370	366	11	55	52%	\$15,017.24	\$24,888 <i>Actual Spent \$16,455.04<sup>4</sup></i>	1 <sup>st</sup>
Lutheran Family Services of Nebraska (Lexington)	2 <sup>nd</sup>	28	52	327	391	9	105	88%	\$2,559	\$18,750	3 <sup>rd</sup>
Minnechaduzza Foundation (Valentine)	3 <sup>rd</sup>	161	585	161	1935	22	516	43%	\$14,245	\$10,886	3 <sup>rd</sup>
Oasis Counseling International (Norfolk)	3 <sup>rd</sup>	25	36	364	509	15	205	33%	\$25,287	\$12,500	1 <sup>st</sup>
Regional West Med Center (Scottsbluff)	2 <sup>nd</sup>	338	338	426	426	0	0	32%	\$23,504	\$11,000	3 <sup>rd</sup>
<b>Year End Totals</b>	--	<b>1,734</b>	<b>16,295</b>	<b>1,648</b>	<b>19,848</b>	<b>118</b>	<b>1,958</b>	<b>48.10%</b>	<b>\$214,774</b>	<b>\$148,083<sup>5</sup></b>	--

<sup>1</sup> Represents total home visits for 2007-08 for the 118 adults and 140 children.

<sup>2</sup> LLCHD did not use all funds awarded in 2007-08. The grantee has been asked to return \$516.55 to the NCAPF Board.

<sup>3</sup> Final reporting for Friendship Home / Family Violence Council is not due until October 31, 2008.

<sup>4</sup> City of Lincoln P&R Dept did not use all funds awarded in 2007-08. Grantee was awarded carryover of \$3013.80; the grantee has been asked to return \$5419.16 to the NCAPF.

<sup>5</sup> YR End Total for Award Amount is based on total amount awarded to the grantee.

# Appendix

## Child Abuse and Neglect Trends in Nebraska CY 2003 - 2007

### I: Statewide Reports of Abuse & Neglect

Calendar Year	Total Reports Assessed*	Number of Substantiated Reports	Involved Children	18 and Under Population Estimates
2003	9,296	2,423 (26.1%)	3,610	471,235
2004	13,291	3,336 (25.1%)	4,896	470,415
2005	13,897	3,324 (23.9%)	4,841	470,046
2006	12,629	3,065 (24.3%)	4,335	469,771
2007	13,319	2,894 (21.7%)	4,440	470,391

\* Includes reports in process of assessment

### II: Substantiated Allegations: Types and Victim Count

Calendar Year	Physical Abuse	Emotional Abuse	Physical Neglect	Emotional Neglect	Medical Neglect of a Handicapped Infant	Sexual Abuse	Total Allegation Counts	Children Involved in Substantiated Reports of Abuse
2003	829	363	3,712	221	6	363	5,494	3,610
2004	969	374	5,787	332	2	441	7,905	4,896
2005	809	481	5,892	231	4	540	7,957	4,840
2006	734	440	5,984	176	2	439	7,775	4,335
2007	805	196	6,860	280	0	449	8,590	4,440

\* Total number of substantiated allegations exceeds the total number of children involved due to the fact that some children are victims of multiple types of abuse and neglect.

III: Substantiated Allegations: Types, Genders and Victim Count

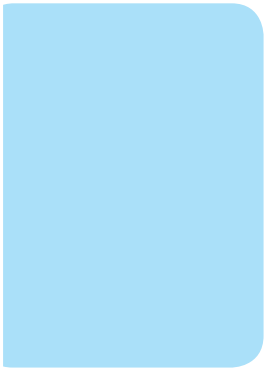
Calendar Year	Allegation Type	Total Allegations	Gender		Children Involved*
			Female	Male	
2005	Physical Abuse	809	295	356	651
	Emotional Abuse	481	154	160	314
	Sexual Abuse	540	352	114	466
	Emotional Neglect	231	82	83	165
	Physical Neglect	5,892	1,877	2,023	3,900
	Med Neg Hndcp Infant	4	2	2	4
	<b>Total</b>	<b>7,957</b>	<b>2,762</b>	<b>2,738</b>	<b>5,500</b>
2006	Physical Abuse	734	288	304	592
	Emotional Abuse	440	141	146	287
	Sexual Abuse	439	292	76	368
	Emotional Neglect	176	58	53	111
	Physical Neglect	5,984	1,919	2,005	3,924
	Med Neg Hndcp Infant	2		2	2
	<b>Total</b>	<b>7,775</b>	<b>2,698</b>	<b>2,586</b>	<b>5,284</b>
2007	Physical Abuse	805	309	333	642
	Emotional Abuse	196	77	66	143
	Sexual Abuse	449	281	71	352
	Emotional Neglect	280	82	83	165
	Physical Neglect	6,860	2,075	2,220	4,295
	Med Neg Hndcp Infant	0	0	0	0
	<b>Total</b>	<b>8,590</b>	<b>2,824</b>	<b>2,773</b>	<b>5,597</b>

\* Children who are victims of the same allegation type in different reports are counted for each report in which they appear, accounting for the difference in the total number of children involved between Table II and Table III.

Data Sources:

Child Abuse or Neglect, Annual Report for Calendar Years 2005-2006, and Calendar Year 2007 Nebraska Department of Health and Human Services, Office of Protection and Safety. To view the reports in entirety, visit [www.hhs.state.ne.us/srd/P&S-CANANNUAL05-06.pdf](http://www.hhs.state.ne.us/srd/P&S-CANANNUAL05-06.pdf) and [www.hhs.state.ne.us/srd/P&S-CANAnnual2007.pdf](http://www.hhs.state.ne.us/srd/P&S-CANAnnual2007.pdf)





Prepared for the  
Nebraska Child  
Abuse Prevention  
Fund Board  
by  
Nebraska Children  
and Families  
Foundation