



Welcome and introductions. Layout format of the webinar. Highlights and overview of RFP, 30minutes for Q&A. Explain process for asking questions.

Please Mute all Phones for this webinar

Feel free to ask questions using the Go to Meeting chat option or hold your question(s) until the end and you can ask them verbally. All questions will be recorded and added to the FAQ to allow for later review. The FAQ will be located on our website along with all other important documentation.

Connected Youth Initiative: Social Innovation Funding

This initiative and funding opportunity is made possible through:

- Social Innovation Fund (SIF) grant from the Corporation for National and Community Service (CNCS) to Nebraska Children
- Matching grant support from:
 - The Sherwood Foundation
 - William and Ruth Scott
 - Local Match



SIF described:

With the simple but vital goal of *finding what works, and making it work for more people*, the Social Innovation Fund and its' grantees create a learning network of organizations working to implement innovative and effective evidence-based solutions to local and national challenges in three priority areas: economic opportunity, healthy futures, and youth development.

Nebraska Children:

SIF was a competitive grant application with a total of 8 new grantees for 2015-2017 with 3 additional non-competitive funding years. Classic SIF grant – unites public and private resources to evaluate and grow innovative community-based solutions that have evidence of results in low-income communities.

Funding

\$1 million Federal

\$1 million Private match

\$1 million local contribution

Capacity

The intention of the this grant is to expand rural communities capacity to support older youth, create sustainable change through local invest/community ownership, scale a successful model to more or new populations, and develop evidence based solutions for social concerns

Connected Youth Initiative: Social Innovation Funding

General Information and Key Dates

- RFP is available on the Nebraska Children website <http://www.nebraskachildren.org/connectedyouth.html>
- Letter of Intent and Community Readiness Questionnaire due by 5:00 p.m. CST on October 7, 2015
- Full proposals due through our online application process by 5:00 p.m. CST on November 20, 2015



RFP was released on Sept. 4th

Connected Youth Initiative: Social Innovation Funding

Population Definition

Unconnected youth are defined as young adults ages 14 -24 in rural Nebraska who find themselves disconnected from a positive life course due to child welfare, juvenile justice system involvement (including diversion or young adults transitioning out of Probation), who have experienced homelessness, and are lacking the services and supports they need to make successful transitions to adulthood. (RFP pg. 3)



Unconnected youth –

Goal of the Rural Nebraska Connected Youth Initiative, Social Innovation Fund (SIF)

The goal of the Nebraska Children's Connected Youth Initiative, Social Innovation Fund competition is to select a diverse portfolio of 7 to 10 communities using a collective impact approach to improve outcomes for unconnected youth in rural communities. Successful applicants will have a high likelihood of success in implementing the core components of a Connected Youth system, have the financial management systems in place to manage a federal grant, and have the ability to participate in a third-party evaluation and support a performance management system.

SSHRY model in combination with Project Everlast Omaha

Funding Details

Number of estimated awards	7-10 communities
Award amount range	\$100,000 to \$150,000/year for two years (with potential to continue another 3 years)
Cash match required	1:1 non-obligated, non-federal funds
Minimum number to be served	200 young people ages 14 – 24 with varying levels of high impact and low impact interventions
Initial project period	24 months
Project start date	January 15, 2016



Match

The Social Innovation Fund recipients are required to raise match funds equal to the grant they receive. The match must be in cash from non-federal sources; in-kind match is not allowable. Matching funds must be unrestricted new or existing dollars. They cannot be previously, obligated funding that is redirected for purposes of meeting the Social Innovation Fund match requirement

Matching Funds

The non-federal share of the budget represents the dollar-for-dollar cash matching funds requirement. Any organization that receives a SIF award is responsible for securing the necessary matching funds. Matching funds may come from state, local, or private sources, which may include state or local government agencies, businesses, private philanthropic organizations, or individuals. Federal funds may not be used toward the match requirement.

The non-federal share of the budget must equal or exceed the federal share of the budget (this implements the dollar-for-dollar cash match requirement). There is no requirement that the non-federal share of the budget “mirror” or be allocated on the same basis as the federal share of the budget. For example, it is not required that 80 percent of the recipient’s share of funds be allocated to subrecipients, as is required for the federal share.

Additionally:

If the applicant is an eligible partnership that includes a State Commission or a local government office, the state or local government involved must provide not less than 30 percent and not more than 50 percent of the matching funds.

CYI System | Core Principles

Broad-based collaborative with Collective Impact backbone and functions that support:

- Central access navigation/common referral process
- Alignment of resources and ability to fill gaps in services and supports to focus on outcomes
- Youth IDA's or Financial Literacy
- Youth engagement and leadership
- Policies and systems change



Central Access Navigation

The Central Access process is designed to be a systematic approach to a continuum of care and to provide a place of reference, referral and coordination, and system-wide data collection for connected youth resources and services. A strong Central Access process will:

- Provide a youth centered approach to help identify needs and services available
- Maintain a “warm hand-off” approach to referrals by advocating for the youth with agencies and organizations that will deliver services
- Collect data that helps to identify gaps in services, tracks who is accessing services, how many youth after age 14-24 are in the service area, what are the immediate needs of youth, mapping the referral practices for the service area, etc.
- Maintain or develop an extensive referral network with community partners

Nebraska Youth Individual Development Accounts

A matched savings account, which could be personal bank account or an Individual Development Account (IDA), designed to help an individual establish a pattern of regular savings and accumulate assets. An “asset” is something of value that is likely to return substantial long-term benefits to its owner—benefits like security, stability, and opportunities for more income.

- Nebraska Youth IDA will provide financial literacy curriculum to increase youth knowledge around financial matters
- Help youth identify their credit score and financially coach the youth through a process of establishing, repairing, or maintaining their credit scores

Collective Impact Explained

Type of Collaboration	Definition
Collective Impact Initiatives	Long-term commitments by a group of important actors from different sectors to a common agenda for solving a specific social problem
Funder Collaboratives	Groups of funders interested in supporting the same issue who pool their resources
Public-Private Partnerships	Partnerships formed between government and private sector organizations to deliver specific services or benefits
Multi-Stakeholder Initiatives	Voluntary activities by stakeholders from different sectors around a common theme
Social Sector Networks	Groups of individuals or organizations fluidly connected through purposeful relationships, whether formal or informal



Collective Impact

The commitment of a group of actors from different sectors to a common agenda for solving a specific social problem, using a structured form of collaboration. The concept of collective impact was first articulated in the 2011 [Stanford Social Innovation Review](#) article *Collective Impact*, written by John Kania, Managing Director at FSG, and Mark Kramer, [Kennedy School](#) at Harvard and Co-founder FSG.

For this initiative, the concept of collective impact hinges on the idea that in order for organizations to create lasting solutions to social problems on a large-scale, they need to coordinate their efforts and work together around clearly identified goals for unconnected youth.

Five Conditions for Collective Impact

- Common Agenda
- Shared Measurement
- Mutually Reinforcing Activities
- Continuous Communication
- Backbone Support



Initiatives must meet five criteria in order to be considered collective impact:

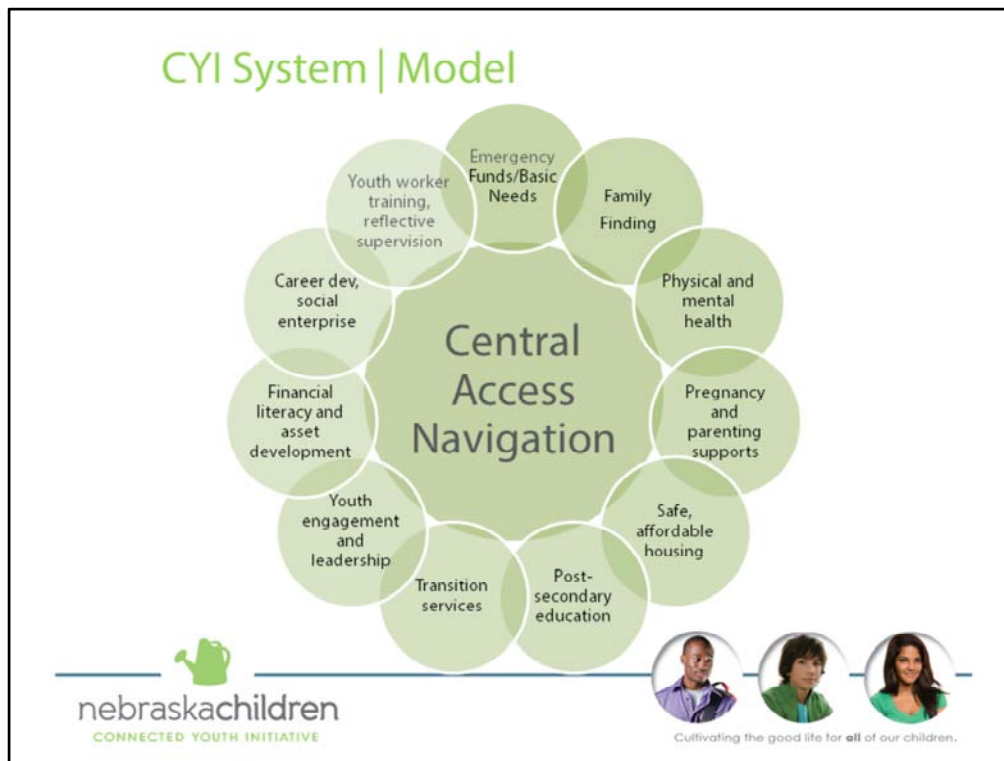
Common Agenda: All participating organizations and participants have a shared vision for social change that includes a common understanding of the problem and a joint approach to solving the problem through agreed upon actions.

Shared Measurement System: Agreement on the ways success will be measured and reported with a short list of key indicators across all participating organizations.

Mutually Reinforcing Activities: Engagement of a diverse set of [stakeholders](#), typically across sectors, coordinating a set of differentiated activities through a mutually reinforcing plan of action.

Continuous Communication: Frequent communications over a long period of time among key players within and across organizations, to build trust and inform ongoing learning and adaptation of strategy.

Backbone Organization: Ongoing support provided by an independent staff dedicated to the initiative. The backbone staff tends to play six roles to move the initiative forward. *Guide Vision and Strategy; Support Aligned Activity; Establish Shared Measurement Practices; Build Public Will; Advance Policy; and Mobilize Funding.*

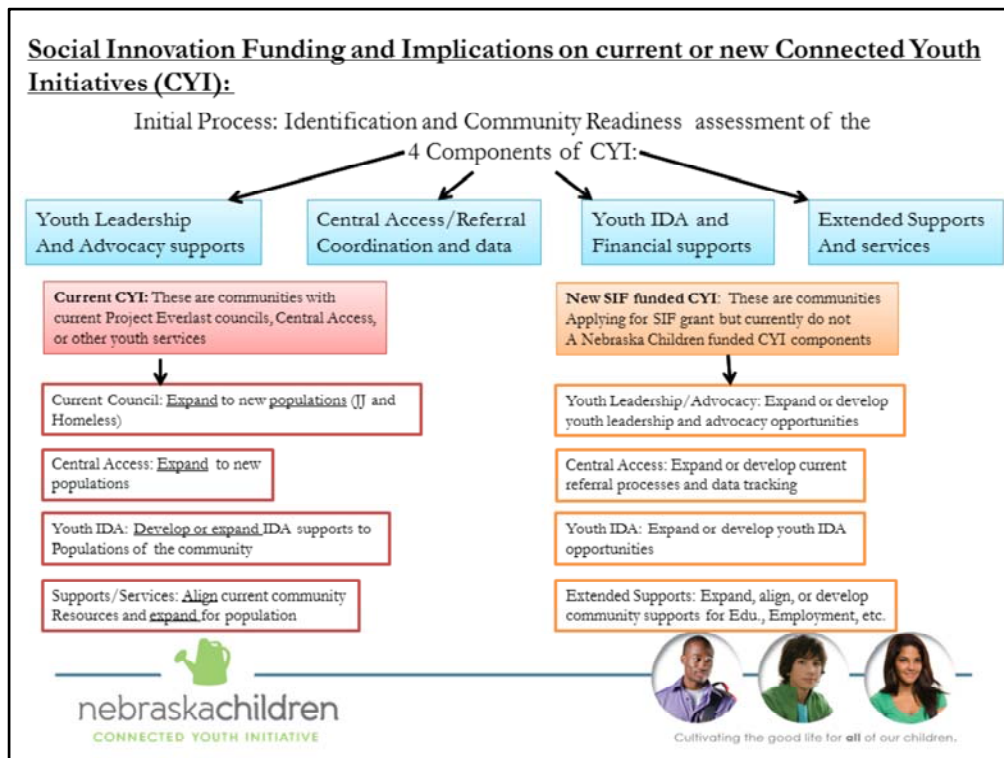


Post-Secondary/Employment: Youth receive sufficient supports and resources to achieve educational goals and have access to employment trainings/internships to enable them the opportunity to obtain and retain employment.

Housing: Youth have access to available, safe, stable, and affordable housing in the community to help provide a place of belonging and self-reliance. Housing should be dependable and in order to be self-reliant youth must be able to have an affordability plan to maintain their housing opportunity.

Physical and Mental Health: Youth have sufficient and affordable health insurance and services for both physical, dental, and mental health. Health services should also provide special considerations for addiction, medications, and supports for parenting and pregnant unconnected youth.

Daily Needs: Youth have access to food and other items to support daily activities and lifestyle. Reliable access to transportation should be addressed as a daily need in order to maintain employment, get to needed health services, achieve educational goals, and establish a long term housing option.



Process for developing a Connected Youth Initiative with or without current funding from Nebraska Children for older youth work.

Nebraska Children will provide technical assistance to the backbone organization and collaborative in each community, along with the anchor programs implementing the Connected Youth System. Nebraska Children will provide coaching to the backbone/collaborative on data collection and analysis for shared measurement, accountability, evaluation, continuous improvement, and sustainability planning.

Nebraska Children will also offer two annual cross-site convening's, bi-monthly program lead meetings, and monthly conference calls to build and support a robust community of practice among SIF subrecipients and to maintain fidelity to the Connected Youth Initiative model.

Nebraska Children will support the development of long-term sustainability plans as part of the technical assistance to subrecipients. This will help subrecipients meet the expectation that they develop a long-term sustainability plan for continuing to scale up effective interventions after SIF funding has ended. Sustainability plans will be expected to outline the specific public and private funding streams that have been leveraged to support the sustainability of the interventions.

About evaluation

- The Social Innovation Fund's purpose is to grow innovative, evidence-based approaches used by organizations to improve the lives of people served by those organizations.
- Nebraska Children will implement a rigorous evaluation plan in partnership with a third-party independent evaluator, local communities and CNCS.



Social Innovation Fund Evidence Tiers

Evidence Tiers: The Corporation for National Service Social Innovation Fund uses the following definitions of preliminary, moderate, and strong evidence, recognizing that there are multiple levels of development within each tier. These definitions are consistent with those used by the Office of Management and Budget:

Preliminary evidence means evidence that is based on a reasonable hypothesis supported by credible research findings. Thus, research that has yielded promising results for either the program model or a similar program model will meet CNCS' criteria. Examples of research that meet the standards include: 1) outcome studies that track participants through a program and measure participants' responses at the end of the program; and 2) third-party pre- and post-test research that determines whether the participants have improved on an intended outcome.

Evaluation Costs

A significant share of total evaluation costs to be incurred by sub-recipients in the implementation of SIF-funded activities is borne by Nebraska Children in our project budget.

However, sub-recipients must share in the costs of some evaluation activities and are expected to budget within their grant proposals to us, the following evaluation costs at minimum:

- Sub-recipient data collection and reporting software (product to be determined) and licenses for the community-based service providers that will need them,
- Personnel time to collect, enter, report and analyze evaluation data



The SIF program nationally has three tiers of evidence: preliminary, moderate, and strong (defined later in this section). Nebraska Children is required to fund community applicants that:

- Demonstrate that they have held responsibility for a program or service that has already been shown by credible research to have preliminary evidence of success as defined by SIF;
- Demonstrate that they have experience collecting, reporting, and managing data; and
- Demonstrate that they have experience collecting and managing data in a shared-use environment.

Using SIF and private funding, Nebraska Children will assist subrecipients to meet evaluation goals throughout the subrecipient's implementation of the Connected Youth model.

Performance Management

All subrecipients will be required to use performance measures to assess progress toward achieving their stated goals. Subrecipients will create community implementation plans that will include process for scaling the model, tracking central access data, and gathering initial and follow-up survey information from youth.

Letter of Intent: Selection Criteria

Each proposal will be reviewed to identify those Letters of Intent that propose projects with:

- A readiness to implement the core components of a Connected Youth System (as described in Section IV of the RFP)
- Financial management systems in place to manage a federal grant
- The ability to partner in a third-party evaluation and support a performance management system



All prospective applicants for 2015 funds from the Social Innovation Fund (SIF) grant program must submit a “Letter of Intent” prior to submitting a formal application.

The submission of a Letter of Intent enables a prospective applicant to vet its project ideas with Nebraska Children staff, who can then identify those projects that have a reasonable chance of success in the competitive grant process. Nebraska Children will solicit full proposals for only those projects that have a reasonable chance of success in the grant competition process based on Nebraska Children’s analysis of the information provided in the Letters of Intent.

LOI Selection Criteria (cont'd)

LOI will be reviewed for:

- Conformance to the required format
- Clarity of presentation of all required elements
- Alignment with eligibility requirements

Each application will be screened to determine eligibility as described in Section XI. Applicants submitting a Letter of Intent will be notified of their eligibility to apply by Wednesday, October 14, 2015. Applicants will be notified of a disqualification determination by email or by USPS postal mail within 30 business days from the closing date of this funding opportunity announcement.



Nebraska Children **will not accept** applications submitted after the application deadline, therefore, allow sufficient time for online submission. Nebraska Children will provide confirmation via email upon the completed electronic submission of each Letter of Intent. Keep this email as verification that the applicant's LOI was submitted. If no confirmation email is received, inquire about the status of your LOI by emailing Jamie Anthony at janthony@nebraskachildren.org.

RFP Details | Next Steps

If you are approved to submit a full proposal:

- See description of what Project Narrative should contain (RFP p. 21, Item F)
- Asks 3 questions (Same as LOI)
- Requires no attachments

**Full proposal due:
November 20, 2015
5:00 pm CST**



Proposals received by November 20, 2015 meeting eligibility criteria will be reviewed and scored by members of a review team made up of Nebraska Children senior staff, two (2) young people and up to three (3) external reviewers. Each proposal will be reviewed by at least two reviewers who will independently review and score each proposal using a standardized evaluation tool that aligns with the selection criteria further described on the next slide which aligns with the proposal outline/guidance described in Section XIV

Applications determined to be non-compliant will not be considered. An application is compliant if the applicant satisfies all of the following requirements:

- Is an eligible organization.
- Submitted an application and required documentation by the submission deadline.
- Submitted an application that is complete; in that it contains all required elements and additional documents and follows the instructions provided in the notice.
- Submitted a budget reflecting required work activities, including applicant share of local evaluation costs.

RFP Details | Application Scoring

Proposal Section	Key Selection Criteria	Points
Description of Need	Low-income community, philanthropically underserved	10
Organizational and Collaborative Capacity	High-performing nonprofit, cross-sector collaboration of connected youth system, collect and analyze data, evaluation capacity	25
Project Description – Narrative	Comprehensive plan for addressing the supports and service needs of youth transitioning to adulthood	35
Project Description – Timeline	Specific, achievable	10
Budget, budget narrative, match, financial questionnaire	Reasonable budget, high-performing nonprofit, fiscally sound, match	20



Low-Income Community

For purposes of this RFP, “low-income community” means either:

A population of individuals or households being served by a subrecipient on the basis of having a household income that is 200 percent or less of the applicable federal poverty guideline, OR

Either a population of individuals or households, or a specific local geographic area, with specific measurable indicators that correlate to low-income status, such as, but not exclusive to, K-12 students qualifying for free or reduced lunch, long-term unemployment, risk of homelessness, low school achievement, persistent hunger, or serious mental illness. An application that proposes to rely on measurable indicators should fully describe the basis for relying upon those indicators (including citations to appropriate studies). The application also must describe and cite the source of data supporting the conclusion that the targeted community meets the indicators.

Significantly Philanthropically Underserved

For purposes of this RFP, we consider applicants to be serving significantly philanthropically underserved communities if they operate in low-income communities that have considerably less than the average number of active philanthropic investments as similarly populated communities.

Background Checks

Beginning April 21, 2011, the law required that programs conduct three-part checks -- including FBI, statewide repository, and sex offender registry checks -- on individuals who will have recurring contact with vulnerable populations. Vulnerable populations include youth age 17 or younger, persons age 60 and older, and/or individuals with disabilities.

All employees, participants, and others who receive a salary or stipend under CNCS grants, even if the activities don't involve service with vulnerable populations, must receive the checks **prior** to beginning employment or service.



Background Checks

Three-step process

1. National Sex Offender Public Website
 - a. <http://www.nsopw.gov/>
2. State Criminal History Report
 - a. <https://statepatrol.nebraska.gov/criminalhistoryreports.aspx>
3. FBI Fingerprint Check (only required for those with recurring access to vulnerable populations)
 - a. <https://www.fbi.gov/about-us/cjis/identity-history-summary-checks>

Full resource list can be found at

<http://www.nationalservice.gov/resources/criminal-history-check>



Dates to remember

Letter of Intent Deadline	October 7, 2015 by 5:00 p.m. CST
Notification of Eligibility to Apply	October 14, 2015
Proposal Submission Deadline	November 20, 2015 by 5:00 p.m. CST
Post List of External Reviewers	December 8, 2015
External Review Process	December 8 – December 21, 2015
Subapplicant Overviews to SIF	December 22, 2015 – January 7, 2016
Award Announcements	January 15, 2106
Subrecipient Grant Period	January 15, 2016 – December 31, 2018
Post Summary of External Reviewer Comments	January 22, 2016
Post full applications of successful subrecipients	January 29, 2016



Questions

- Questions can be directed to: Jason Feldhaus at jfeldhaus@nebraskachildren.org
- FAQ <http://www.nebraskachildren.org/connectedyouth.html>



Cultivating the good life for all of our children.