

ROOTED IN RELATIONSHIPS

2020 EVALUATION REPORT HIGHLIGHTS (JUNE 2021)

Community and statewide approaches are designed to ensure young children's social-emotional health.

NEBRASKA CHILDREN AND FAMILIES FOUNDATION

AT A GLANCE

Highlights of the Rooted in Relationships 2020 Evaluation Report (March 2021), prepared by The University of Nebraska Medical Center's Munroe-Meyer Institute. For a copy of the full report, [click here](#).

ABOUT THIS STUDY

Rooted in Relationships is an initiative of Nebraska Children and Families Foundation focused on the social-emotional development of children from birth through age 8. Rooted in Relationships' key components are: work with communities across the state on place-based strategies; implementation of a specific framework of evidence-based practices called the Pyramid Model; and building capacity at the state level.

This evaluation report catalogues work conducted by community partners as well as state level systems work from January 2020 through Dec 2020 through Nebraska Children and Families Foundation's Rooted in Relationships' initiative. The report also describes outcomes observed in classrooms that implemented the Pyramid Model, and outcomes reported by child care providers. Additionally, data on other community driven strategies supported by Rooted in Relationships is included.

RECOMMENDATIONS

While the evaluation report itself does not contain recommendations, Nebraska Children and the evaluation team at the University of Nebraska Medical Center's Munroe-Meyer Institute will leverage the content of the evaluation report as a starting point for discussions reflecting on what has and has not worked during the past year, and use these reflections to improve implementation and ultimately come closer to achieving a quality system for supporting the well-being of young children in Nebraska.

WHAT THE EVALUATION REPORT FOUND

In calendar year 2020, under the umbrella of Rooted in Relationships, 11 collaborative hubs across the state in various stages of the initiative inclusive of planning, implementation and expansion undertook community-based efforts to enhance the social-emotional development of children from birth through age 8. These hubs support work occurring in 24 counties.

A comprehensive planning process

- 1) drove the specific, local strategies chosen,
- 2) highlighted the importance of selecting strategies with the potential to affect systems as well as individuals, and 3) built relationships across multiple stakeholders.

In 2020, the evaluation found that most efforts were tied to one or more of the following elements of systems change: community engagement, public awareness, early screening and detection, and parent engagement.

Child care providers implemented a specific framework of evidence-based practices called the Pyramid Model with the support of an Early Childhood Coach. The majority (61%) of the 118 child care providers that participated were associated with child care centers, and 39% were home-based child care providers. 'Providers' include anyone working directly with children.

Together, these providers served over 2,120 children. Evaluation measures showed that providers made progress in implementing the model. For example, by year 2 of the implementation, more than half (58%) of the child care centers had essential components of the Pyramid Model fully in place—nearly double the percentage before implementation (29%). Moreover, nearly all (96%) of the child care providers who completed their third year of implementation in 2020 reported feeling confident or very confident in their ability to support children's social-emotional development, and their ability to help children when they have challenging behaviors.

96%



of the child care providers reported feeling confident or very confident in their ability to support children's social-emotional development

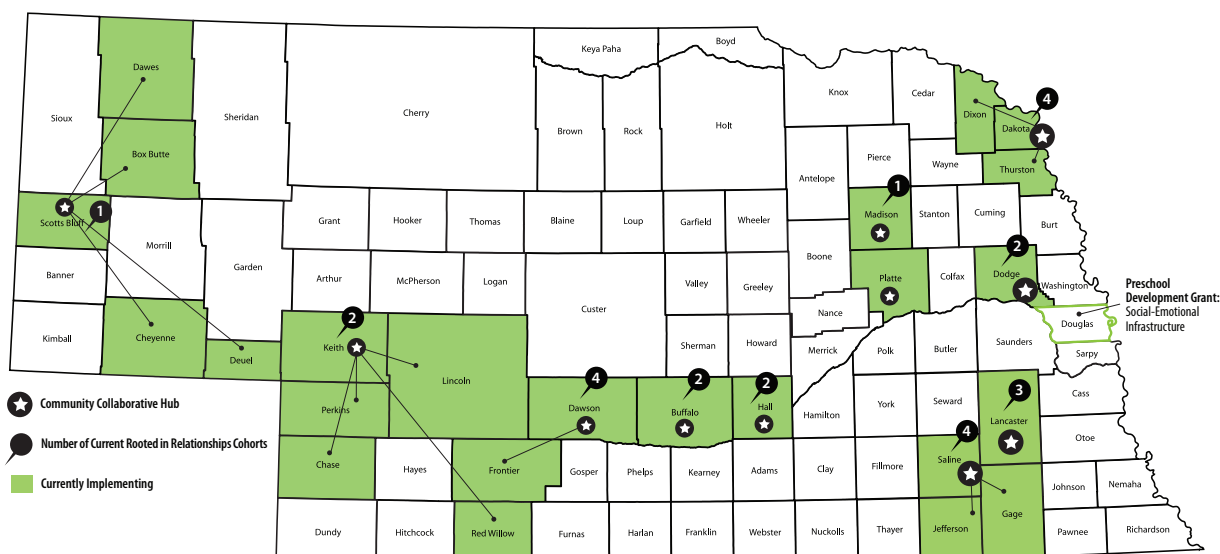
The evaluation also describes the extensive statewide networks focused on ensuring quality environments for young children in which Rooted in Relationships staff are embedded. In 2020, these networks included 19 early childhood groups, 6 state support teams, the Nebraska Association for Infant Mental Health, and the Early Childhood Mental Health Community of Practice. Through these networks as well as other channels, the evaluation report documents the evidence-based practices that Rooted in Relationships staff actively support. In 2020, these were: Reflective Practice, Child Parent Psychotherapy, Parent Child Interaction Therapy, Circle of Security Parenting™ (COSP), training on the Teaching Pyramid Observation Tool (TPOT) and Teaching Pyramid Infant-Toddler Observation Scale (TPITOS), and Parents Interacting with Infants (PIWI).

NEXT STEPS

Future work will include continuing to develop systems that support the social-emotional development of children birth to age 8 in Nebraska. In 2021, Rooted in Relationships will continue to support the 11 collaborative hubs working in 24 counties with six hubs planning to expand Pyramid Model implementation to a new cohort of child care providers in July 2021. Additionally, Rooted in Relationships has been supporting planning in Douglas County as part of the Preschool Development Grant with implementation scheduled to begin July of 2021.

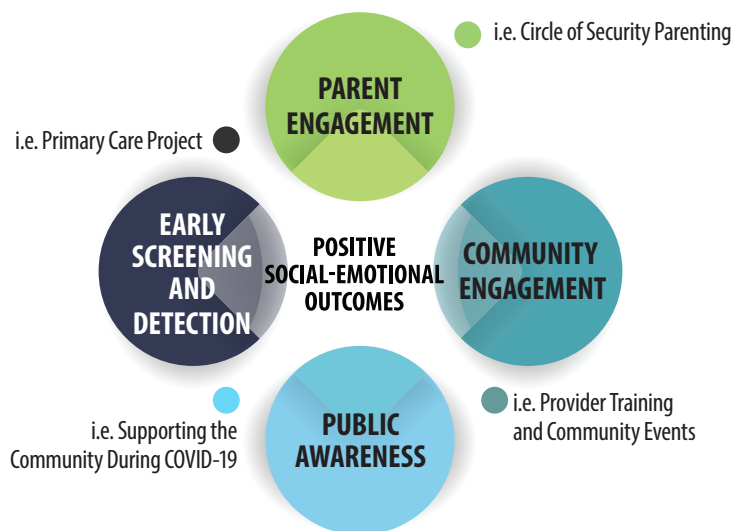
ROOTED IN RELATIONSHIPS SUPPORTED 11 COLLABORATIVE HUBS SPANNING 24 COUNTIES

Rooted in Relationships Growth Map (Current)



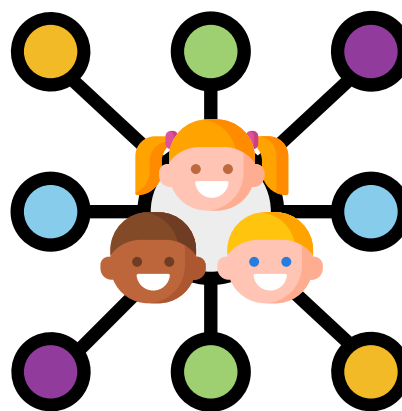
Last update: 02/22/21

COMMON PRIORITY AREAS ACROSS RIR COMMUNITY STAKEHOLDER TEAMS

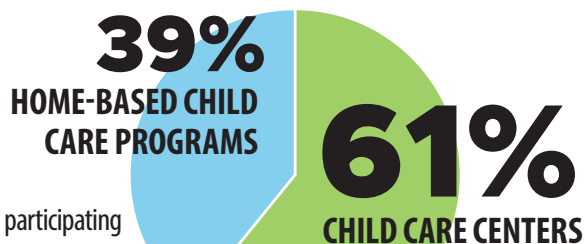


2,120 CHILDREN

SERVED ACROSS 118 CHILD CARE PROGRAMS



215 CENTER AND HOME-BASED CHILD CARE PROVIDERS SUPPORTED BY 38 COACHES



Of the 118 participating child care programs, the majority were **child care centers**.



“

It was good to know I wasn't in this alone. My coach was always there for aid and to make suggestions. If she didn't know for sure she asked others and never left me hanging.”

- A provider reflecting on a coach's support