



# Help Me Grow

## Nebraska

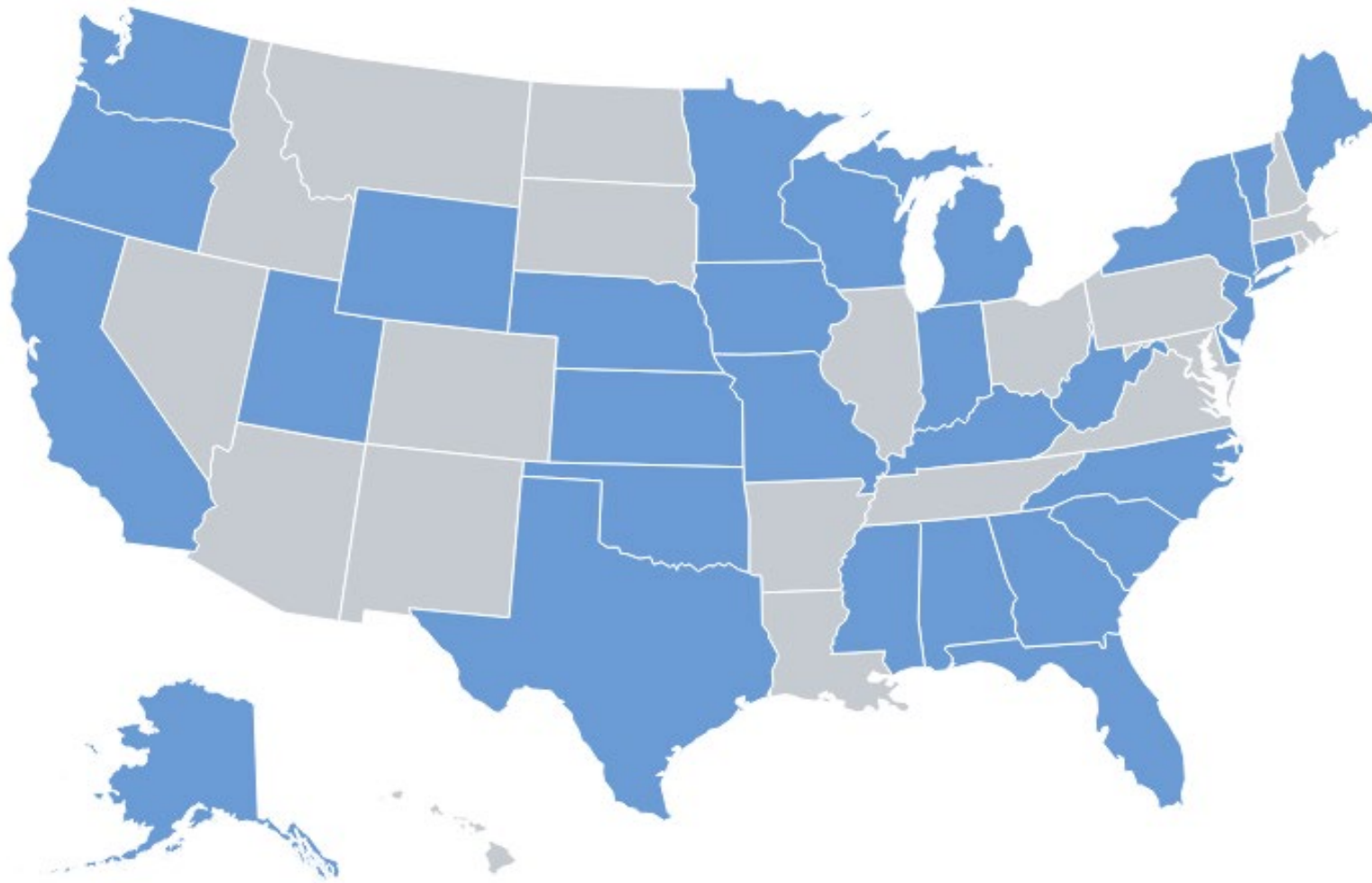
A BETTER FUTURE FOR ALL CHILDREN BEGINS WITH  
HELP ME GROW

Advancing Developmental Promotion, Early Detection and  
Linkage to Services

# What is Help Me Grow?



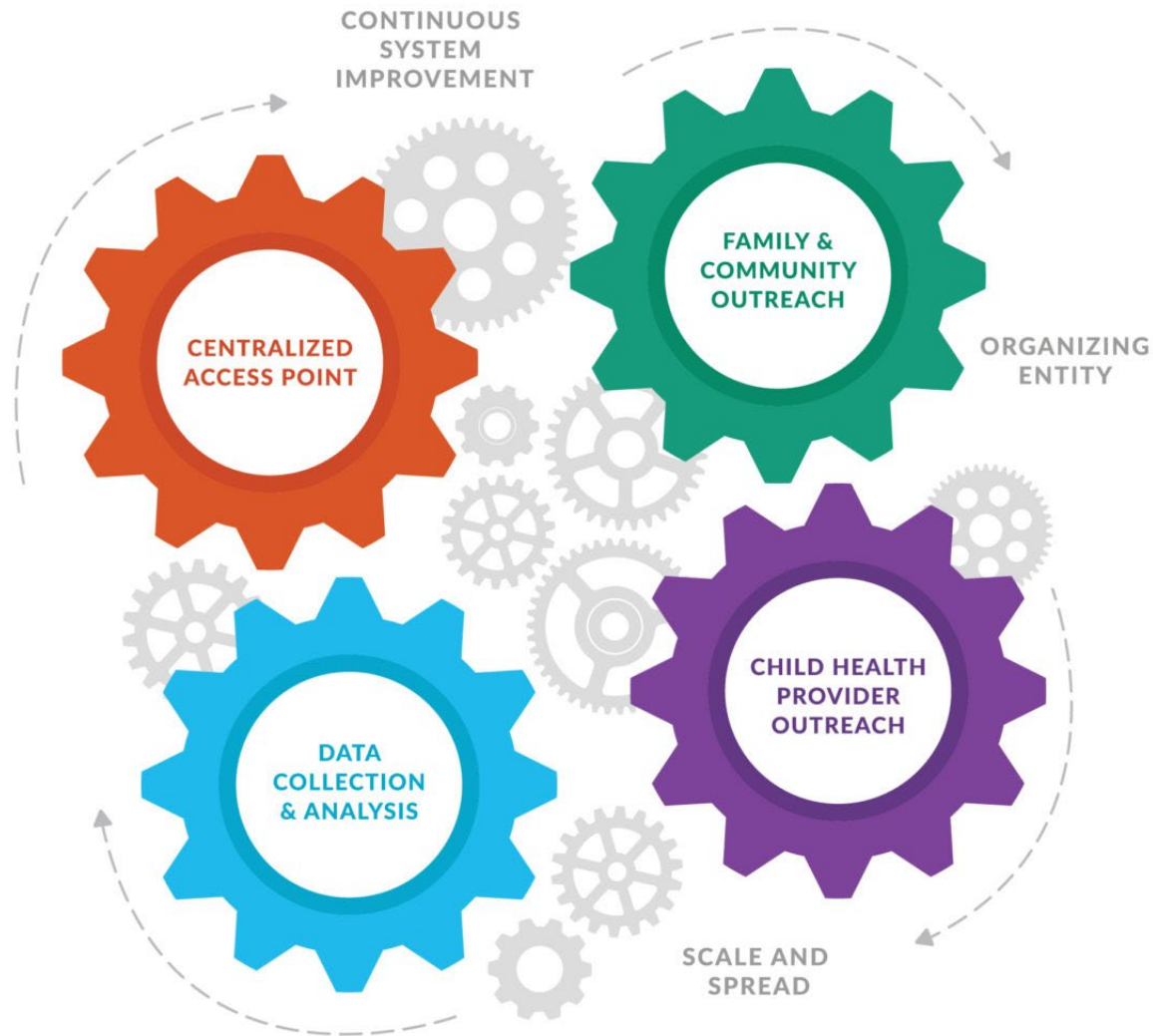
**At its heart, Help Me Grow is a parent information line designed to connect families to information about child development and community resources.**



**The HMG Affiliate Network represents an ever-growing, powerful coalition of states, communities, and individuals invested in ambitious and resourceful early childhood systems that optimally serve all families and children.**



SYSTEM MODEL



- **Child Health Care Provider Outreach**, providing office-based training to support early detection and intervention, and use of the HMG call center.
- **A Centralized Access Point** serves as the hub to link children and their families to community based services and supports, while providing seamless care coordination.
- **Family and Community Outreach** promotes HMG, facilitates provider networking, and bolsters children's healthy development through families.
- **Ongoing Data Collection and Analysis** helps identify gaps in and barriers to the system, and continuous quality improvement processes refine all aspects of the system.





**Family and Community Outreach builds adult caregivers' understanding of healthy child development and their awareness of the supportive services available to families and service providers in the community.**

**Four Key Activities**

- Utilize community partners
- Host or participate in networking events and trainings for community-based providers
- Conduct family events
- Market the HMG system and the Centralized Access Point



**When potential problems are spotted early on, they can be easier to address. Child Health Care Provider Outreach loops medical providers into the system and supports early detection and intervention efforts.**

**Four Key Activities**

- Identify a Physician Champion
- Targeted outreach to child health care providers on developmental surveillance and screening
- Targeted outreach to child health care providers on linkage and referral through HMG
- Close the feedback loop with physicians



**To make sure the system is constantly becoming better, Data Collection and Analysis supports evaluation, helps identify systemic gaps, bolsters advocacy efforts, and guides quality.**

**Four Key Activities**

- Annual reporting of Impact Indicators and Local Use to National Center
- Data sharing across partners
- Continuous System Improvement efforts guided by data
- Community change through data



**A Centralized Access Point assists families and professionals in connecting children to appropriate community-based programs and services.**

Four Key Activities

- Establishment of a specialized child development line
- Linkage to service & follow-up with callers and providers
- Resources are researched for families
- Real time maintenance of early childhood resource directory



# Centralized Access Point: Case Studies



Specialized Child Development Line



Linkage and Follow-Up



Researching Resources



Real-Time Directory Maintenance

*unique interactions to the  
Centralized Access Point*

## Help Me Grow Utah

United Way of Utah County

Email, call, text, mail (up to  
3x)

State 2-1-1 Database  
updated monthly

**2,661**

## Help Me Grow Western New York

2-1-1 Western New York

Call, email, mail, text to  
ensure connection or to  
discuss barriers

ServicePoint, updated  
weekly

**3,516**

# Structural Requirements

## ORGANIZING ENTITY

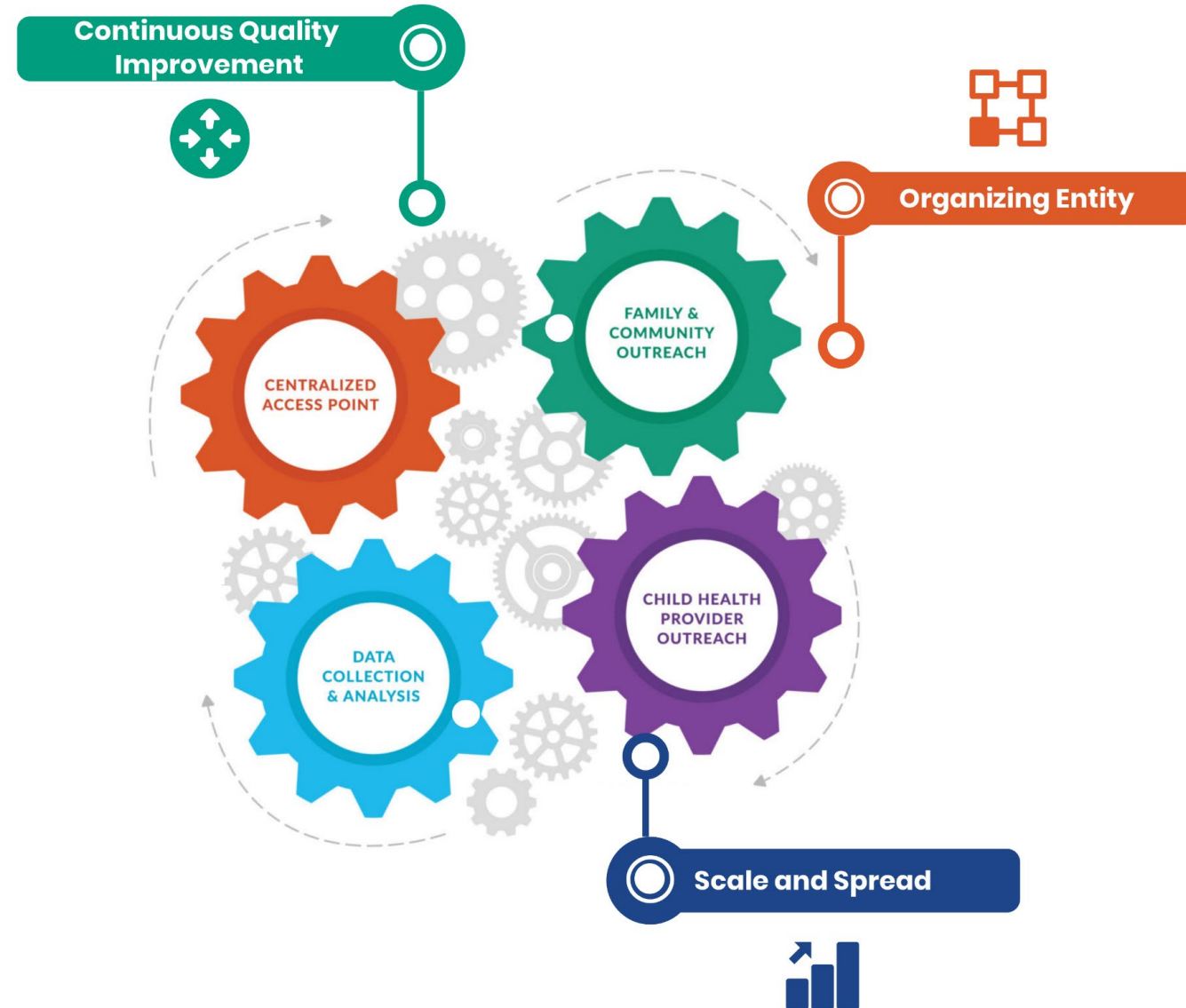
- Guides vision and strategy at the state and local levels
- Supports alignment of activities across local systems
- Facilitates shared measurement practices
- Advances policy through identification of gaps & barriers

## CONTINUOUS SYSTEM IMPROVEMENT

- Emphasizes improvements over time that continue to produce the best outcomes for children and families, maximize efficiency, and yield best practices

## SCALE AND SPREAD

- Deliberate efforts to increase impact of HMG efforts
- Systems are unique, but aligned and coordinated
- Leverages lessons learned through previous efforts
- Ensures all families with young children have access to HMG



## A Vision for a Brighter Future



*Prosperous communities depend on the well-being of all members. By providing families with equitable access to the resources they need when they need them, Help Me Grow works to ensure we all enjoy more vibrant years ahead.*



# Help Me Grow

## Nebraska

A BETTER FUTURE FOR ALL CHILDREN BEGINS WITH  
HELP ME GROW

Advancing Developmental Promotion, Early Detection and  
Linkage to Services

[rhelweg@childrensomaha.org](mailto:rhelweg@childrensomaha.org)